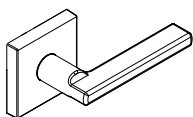
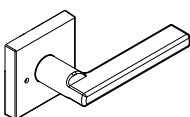


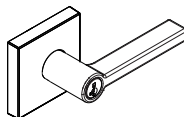
This manual can be used to install a variety of levers.  
Please determine your function type prior to installation.



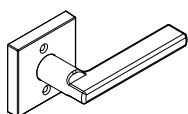
Passage  
(Hall/ Closet)



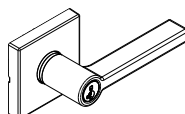
Privacy  
(Bed/ Bath)



Entry  
(Keyed)



Dummy  
(Non-Rotating)



Storeroom  
(Keyed)

## Welcome to the Kwikset family!

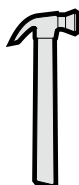
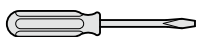
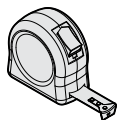
This guide will get you ready to install your lever.

If you have any issues, please visit our support center: [kwikset.com/support](http://kwikset.com/support) or call us at 1-800-327-5625.

## Installation and Reference Guide

**This manual can be used to install a variety of levers.**

### Recommended Tools



wood block



\*Tools will depend on install type

[Door Prep:](#) If you need help in preparing your door

[Drilling Instructions:](#) If you need help in drilling your door

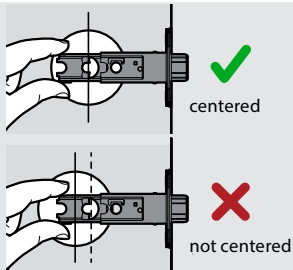
# 1 Adjust the backset of the latch (if needed)

- A** Hold the latch in front of the door hole, with the latch face flush against the door edge.



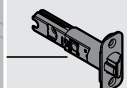
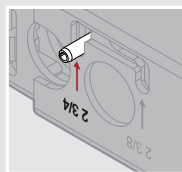
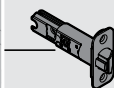
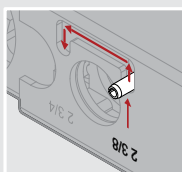
- B** If the latch holes are centered in the door hole, no adjustment is required. Proceed to step 2.

If the latch holes are NOT centered, adjust latch. See "Latch Adjustment" (step 1C).



- C** Latch Adjustment (only if needed)

Move the pin to extend the latch.



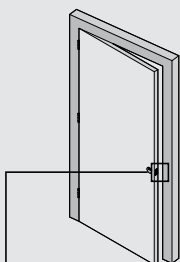
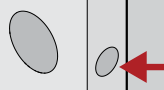
# 2 Install latch

Door edge chiseled

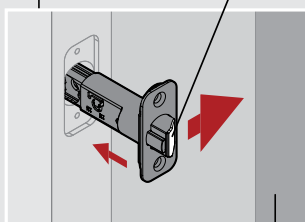


or

Door edge NOT chiseled

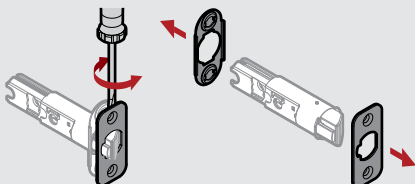


⚠ slant of latch bolt faces door frame

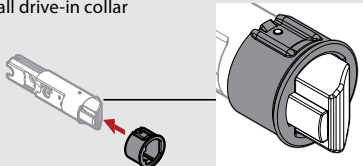


door frame

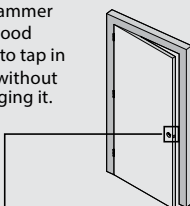
Remove plates



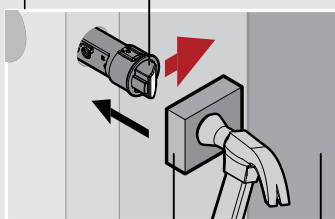
Install drive-in collar



Use hammer and wood block to tap in latch without damaging it.



⚠ slant of latch bolt faces door frame

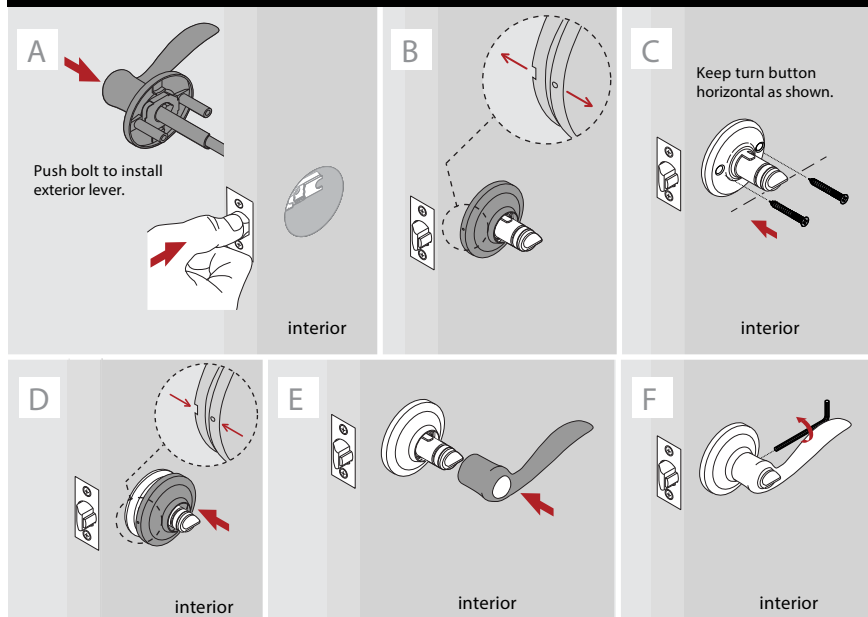


wood block

door frame

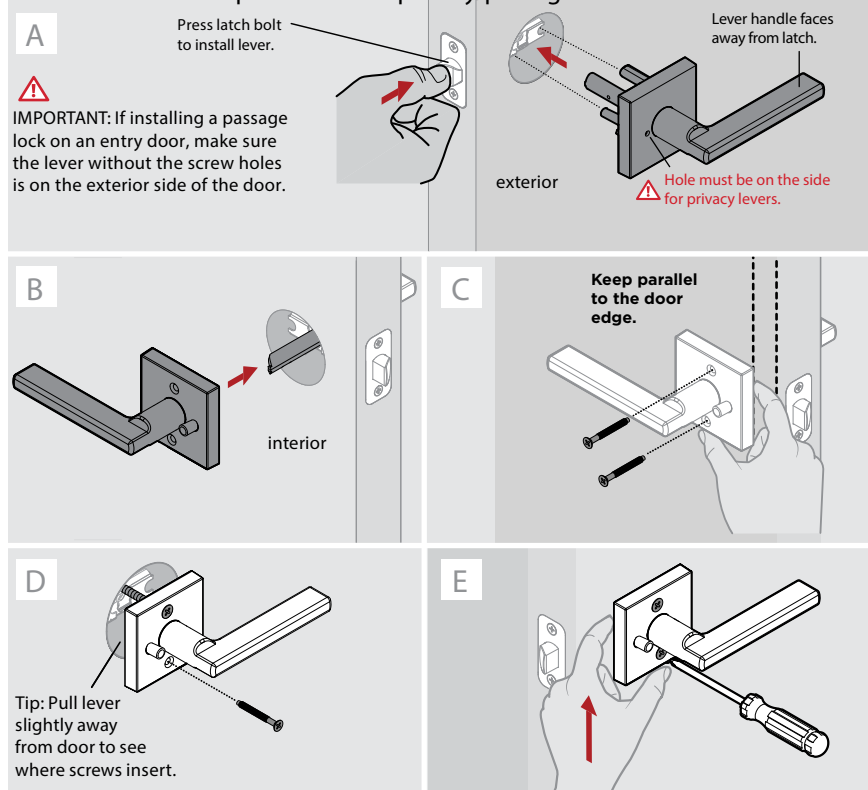


### 3 Install levers (concealed screws)



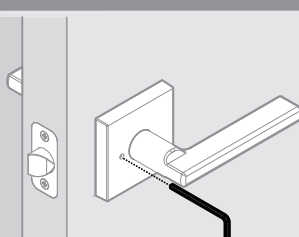
### 3 Install levers (exposed screws)

#### Option 1: Install privacy/passage levers



#### Privacy locks only

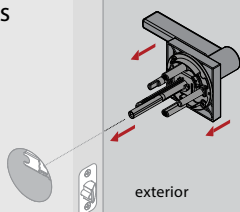
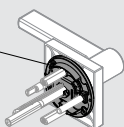
Save the bedroom/bathroom emergency unlock tool for future use.



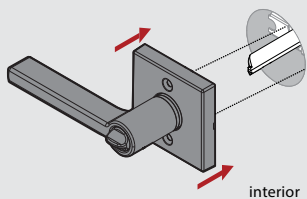
### 3 Install levers (exposed screws)

#### Option 2: Install entry levers

- A** Make sure the pre-installed lever adapter is still on the chassis.

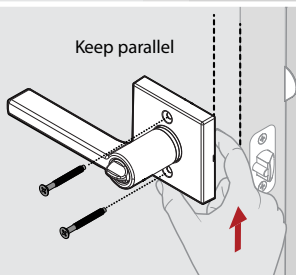


- B** Note: Locking function may differ per lock/lever.



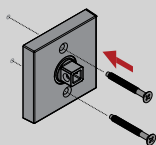
**C**

Keep parallel

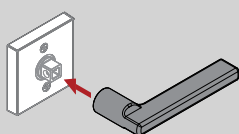


#### Option 3: Install dummy (non-rotating) levers

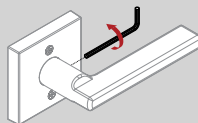
**A**



**B**

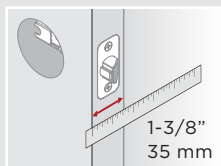


**C**

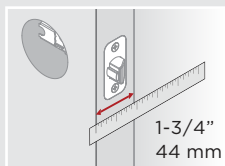


#### Option 4: Install storeroom levers

Measure the thickness of your door to determine if adjustment are required before installing interior lever assembly.

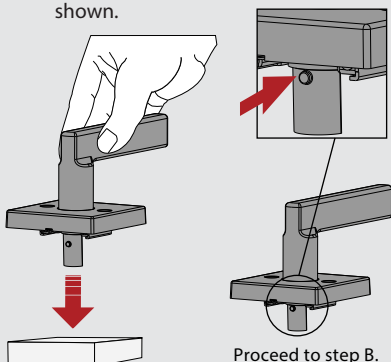


or



**A**

Place a wood block on a solid surface, tap the end of spindle down until the bump is even with lever assembly as shown.



Proceed to step B.

No additional adjustment needed. Proceed to step B.

### 3 Install levers (exposed screws)

#### Option 4: Install storeroom levers

B

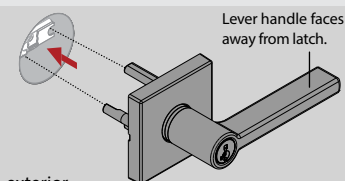
Press latch bolt to install lever.



**IMPORTANT:** If installing a storeroom function lock on a secured door, make sure the keyed lever is on the exterior side of the door.

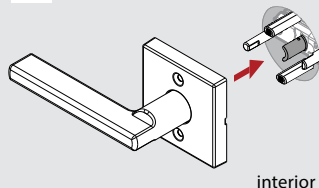


exterior



Lever handle faces away from latch.

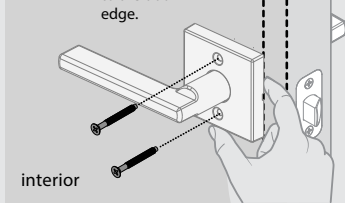
C



interior

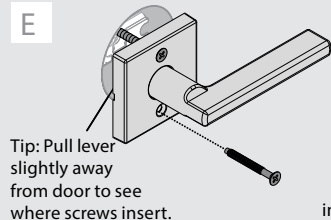
D

Keep parallel to the door edge.



interior

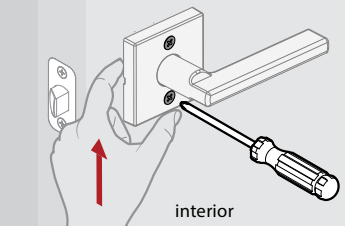
E



Tip: Pull lever slightly away from door to see where screws insert.

interior

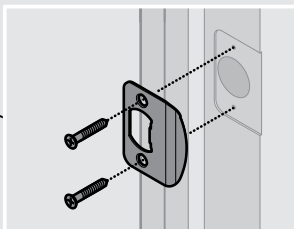
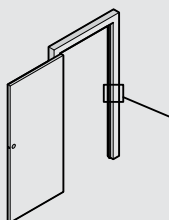
F



interior

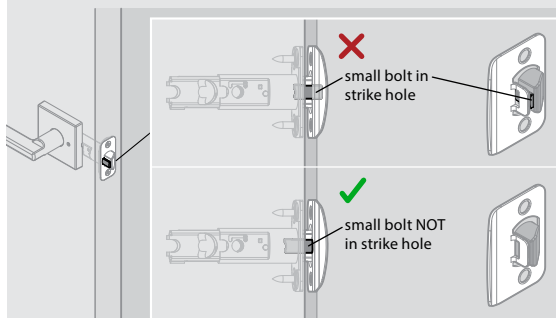
### 4 Install strike to door frame

A

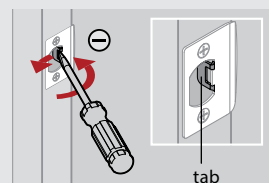


B Close door, test latch operation and make adjustments as needed:

If small bolt of latch enters strike hole, reposition strike.



If latch is loose in the strike, adjust the strike tab so it grips the latch bolt better when the door is closed.



tab

# SmartKey Rekeying Instructions



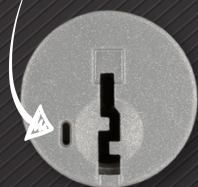
## SMARTKEY SECURITY™

## ONE KEY FOR ALL YOUR LOCKS™

The lock you can  
re-key yourself in  
seconds for any  
situation, including:

Easily re-key  
yourself

Reset tool  
goes here



WITH PROTECTION AGAINST  
ADVANCED BREAK-IN TECHNIQUES



**Recently  
Moved**



**Lost  
Keys**



**Multiple  
Doors**



**Carry  
Less Keys**

For rekeying instructions, you can also visit:

<https://www.kwikset.com/support/answers/how-to-re-key-your-smartkey-security-locks>

If you have any issues, please visit our  
support center: [kwikset.com/support](https://www.kwikset.com/support)  
or call us at 1-800-327-5625.



**WARNING:** This Manufacturer advises that no lock can provide complete security by itself. This lock may be defeated by forcible or technical means, or evaded by entry elsewhere on the property. No lock can substitute for caution, awareness of your environment, and common sense. Builder's hardware is available in multiple performance grades to suit the application. In order to enhance security and reduce risk, you should consult a qualified locksmith or other security professional.